



PRESENTS

# The Pediatric Brain and Resilience Summit

**SEPTEMBER 8-10**

TERRANEA RESORT - CALIFORNIA

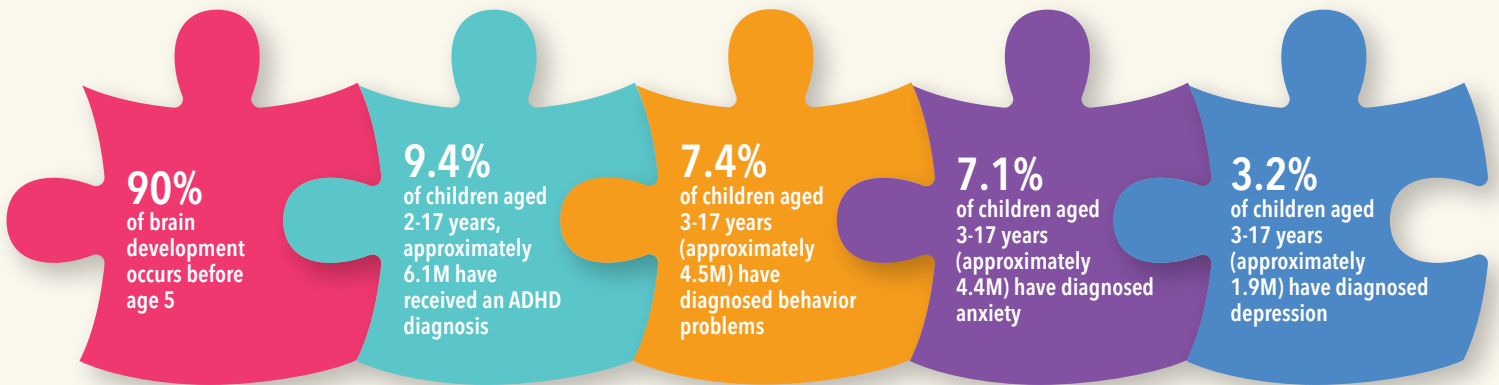


The early years of a child's life are very important for later health and development. One of the main reasons is how fast the brain grows starting before birth and continuing into early childhood. Although the brain continues to develop and change, the initial years can build a foundation for future health, learning and life success.



**Program Chair**

**Elisa Song, MD**



## The Pediatric Brain Health Summit faculty will lecture on topics related to:

🔦 *Early Brain and Child Development*

🔦 *ADD/ADHD*

🔦 *Epigenetic Factors*

🔦 *Asthma and Allergies*

🔦 *Toxic Stress – Why Environment Matters*

🔦 *Depression/Mental Health*

🔦 *Healing the New Childhood Epidemics*

🔦 *Nourishing Mind, Body & Microbiome / Nutrition*

🔦 *Autism*

🔦 *Pediatric Autoimmune Neuropsychiatric Disorders*



### LOCATION

## TERRANEA RESORT

100 Terranea Way.  
Rancho Palos Verdes, CA 90275

# JOIN US

## AT THIS PREMIERE EVENT

### TABLETOP EXHIBITS

## \$10,000



For more information  
call 561-997-0112  
option 2 or email  
exhibitor@a4m.com